



# Planet

I commit to supporting  
Johnson Matthey's ambition  
to build a sustainable business



Environment	74
Product Stewardship	76
Community Investment	79

## At Johnson Matthey, we acknowledge our obligation as a global company to protect the communities we operate in.

Further, we have a duty to protect the limited resources that sustain our businesses and to operate in a manner that will preserve these resources to the greatest extent practical. At a minimum we will operate in accordance with applicable national, regional and local environmental laws and regulations. Where we can, we will apply a higher standard to reduce our environmental impact.

In our businesses, we identify and manage hazardous chemicals, waste water and solid waste properly. We also look to minimise air emissions as far as practicable, ensuring we do not exceed any limits we are obliged to meet under permit or legislation.



### As an employee:

- I minimise waste, recycle and reuse material wherever feasible and I travel only when necessary
- I adhere to my site's standards for protection of the environment and resource use
- I properly operate equipment, maintain infrastructure and only use sensors and other protective devices that are properly calibrated and maintained
- I evaluate all changes (or potential changes) to plants or processes in light of environmental, health and safety impact and legislation.



## What would YOU do?



**Q.**

Shortly prior to opening a new site, you are advised that you need to first obtain a required air emissions permit. Obtaining the permit will delay the opening of the site.

**A.**

Our sites must, at a minimum, be in compliance with applicable laws and regulations with all the necessary permits being held at all times.

**Q.**

During a routine inspection, it is observed that a hazardous material tank is beginning to fail.

**A.**

We are committed to managing our hazardous materials responsibly which includes safe storage to prevent releases. You should **speak up** about your observation so that the tank is either repaired or replaced.



### Johnson Matthey's core values relevant to this section:

- Health and Safety is our Priority
- Integrity
- Ability and Innovation
- Best of Big and Small



### More help and resources

- myJM EHS site
- Group EHS Manager
- Site and Divisional EHS Managers
- Group Sustainability

## Product Stewardship

**At Johnson Matthey we recognise our responsibility to understand, manage and communicate the environmental and health and safety impacts of the chemical products we use and those we produce throughout their lifecycles.**

We aim to protect our people, the users of our products and the environment through the use of the safest possible chemical products and processes able to deliver the necessary technology performance. Our commitment to product stewardship is a key element of our sustainability agenda.

This means we:

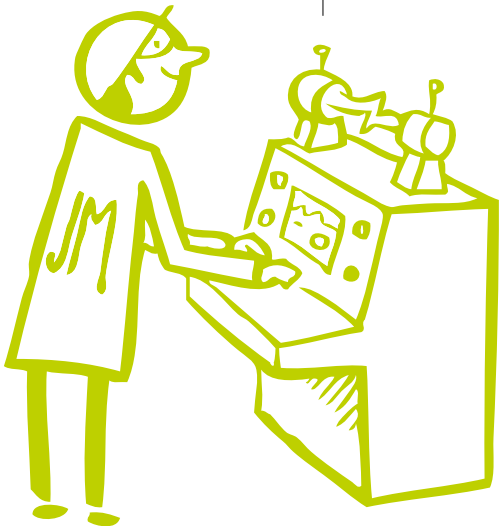
- Identify and understand the hazards to health, safety and the environment associated with the chemicals on our sites
- Communicate clear information on the hazards associated with the chemicals on our sites
- Adopt a life-cycle approach to our products, evaluating their health, safety and environmental impacts at each phase: research, development, commercialisation and discontinuation
- Seek opportunities to replace hazardous chemicals and products with technically equivalent (or superior) but safer alternatives
- Ensure compliance with all chemicals control legislation applicable to our operations, purchases, material handling and supply.





**As an employee:**

- I ensure I am aware of the hazards associated with the chemicals I handle
- I am attentive to situations of actual or potential unsafe handling/ use of chemical products
- I do not purchase, manufacture or supply chemical products without first carrying out the appropriate safety assessments and regulatory reviews.



## What would YOU do?



**Q.**

A cheaper alternative supplier of a key raw material has been identified. The supplier qualification procedure raises uncertainties about that supplier's compliance with chemical registration requirements in their country of operation. Johnson Matthey is not obliged to comply with these requirements.

**A.**

We are committed to compliance with all applicable regulations and cannot deal with suppliers who do not comply with the law. Discuss the legal requirements with the supplier. If they are, in fact, applicable and the supplier cannot meet them, we should find an alternative supplier.

**Q.**

You have designed an alternative manufacturing process that uses a significantly less hazardous raw material than our current process and you want to scale-up the process. However, you have some concerns that the process may generate more hazardous waste materials.

**A.**

Product stewardship in Johnson Matthey needs to consider all stages of a product's lifecycle, including by-products and wastes generated by our manufacturing processes. In making the decision to move the process to scale-up you should take into account the hazard profiles of the raw materials, intermediate and final products as well as the wastes, the measures that will be required to control exposures and how any waste will be disposed of.



### Johnson Matthey's core values relevant to this section:

- Health and Safety is our Priority
- Integrity
- Ability and Innovation
- Best of Big and Small



### More help and resources

- myJM Product Stewardship site
- Group Product Stewardship Manager
- Site and Divisional Product Stewardship team

# Community Investment

**At Johnson Matthey, we believe that investing in our communities is a key part of our social commitment to the places in which we operate.**

We have an important contribution to make to the social and economic development of our local communities, not only as an employer but also through collaboration and investment, both financial and in kind. We also aim to support the future growth of our business through the promotion of science education among young people. To achieve these goals, Johnson Matthey encourages all its operations to undertake a community investment programme.

Our Group Community Investment Policy sets out the types of activities and recipients we support and the criteria that must be followed in order that our charitable efforts and contributions do not conflict with broader Johnson Matthey policies or damage our reputation.



### **As an employee:**

- I can participate in my site's community investment programme by volunteering in the local community or with a charitable organisation or participating in fundraising activities for a charity
- I ensure that I follow the Group Community Investment Policy before committing to any community investment including charitable donations
- I do not involve Johnson Matthey in civic or political activities that I undertake in a personal capacity.



## What would YOU do?



### Q.

A charitable organisation in which you are involved has partnered with a science education organisation and is planning a science fair at a local school. You would like to volunteer but the science fair is on a work day.

### A.

Speak with your manager explaining the background to the activity, your desire to participate and request his or her approval to participate.

### Q.

Your site has recently been acquired by Johnson Matthey and does not have a Community Investment Programme. You are keen to help Johnson Matthey make an impact in your community.

### A.

Speak with your manager and Group Corporate Communications about starting a programme. Depending on your desired level of involvement, you might want to be considered for nomination as a 'Community Champion' to act as the main point of contact for community investment at your site.



### Johnson Matthey's core values relevant to this section:

- Health and Safety is our Priority
- Integrity
- Freedom to Act
- Best of Big and Small



### More help and resources

- Group Community Investment Policy
- Johnson Matthey North America Community Investment Volunteering Policy
- Business Site Community Champion
- Group Investor Relations and Corporate Communications